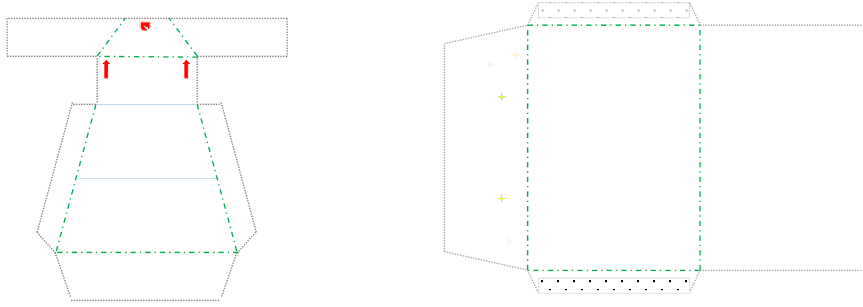
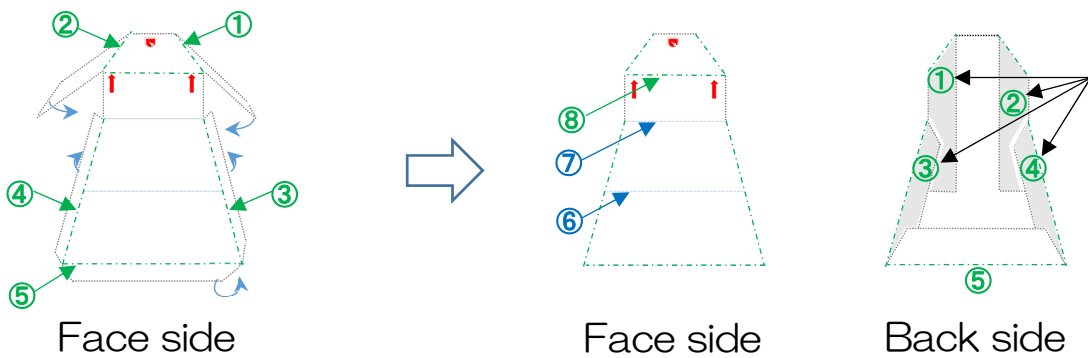


# How to make a Surprise-Envelope “Sparky”

1. Prepare 2 sheets of A4 size paper (parts A · part B) printed from the template.  
Cut out two sheets of paper, each along the black line of the outer frame.



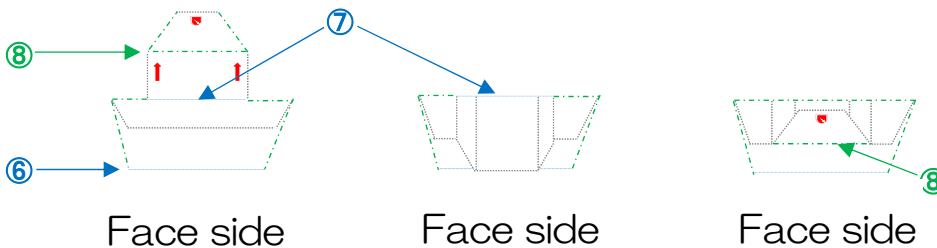
2. Following the lines of ① to ④ of part A, fold straight up, to **mountain fold**. Furthermore, paste on the back side of the part folded at ①, ②, ③, ④ and fix it (or with double-sided tape) to increase the strength. Finally bend ⑤ inward.



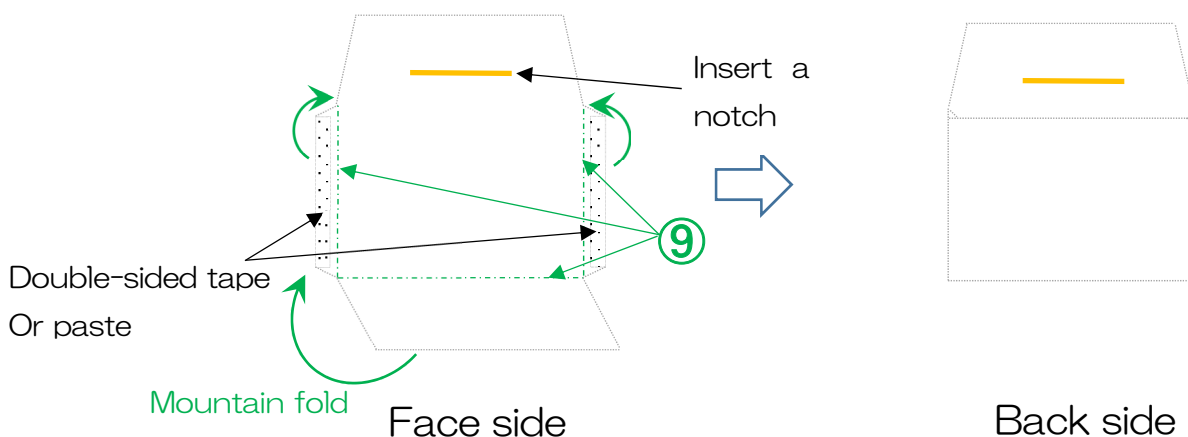
3. Next fold the valley to match the lines of ⑥ and ⑦. And fold mountain ⑧.

**⑥&⑦:Valley fold**

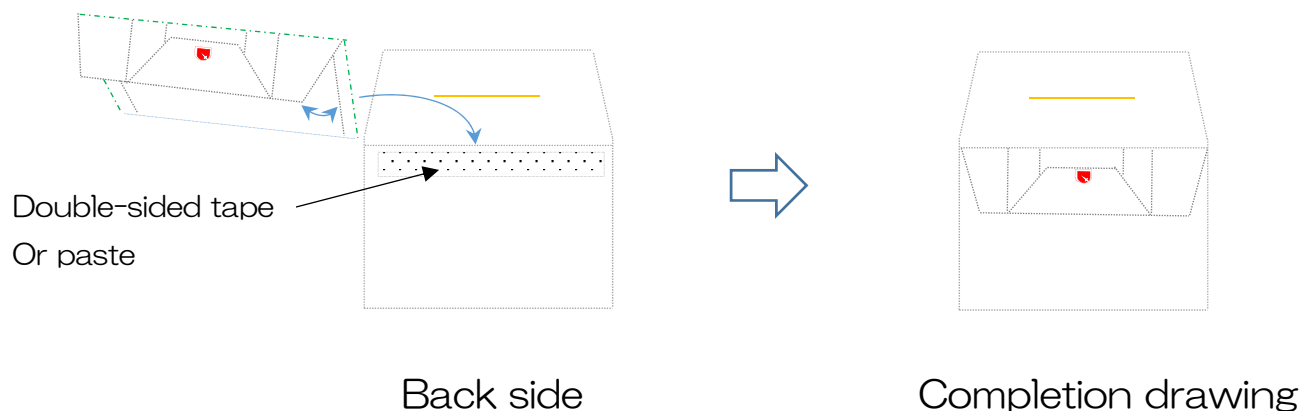
**⑧:Mountain fold**



4. Parts B also folds mountains with ⑨. — — —. Paste the overlapping part of the envelope with double sided tape or paste. For the part of — of the lid, make a notch with a cutter knife.

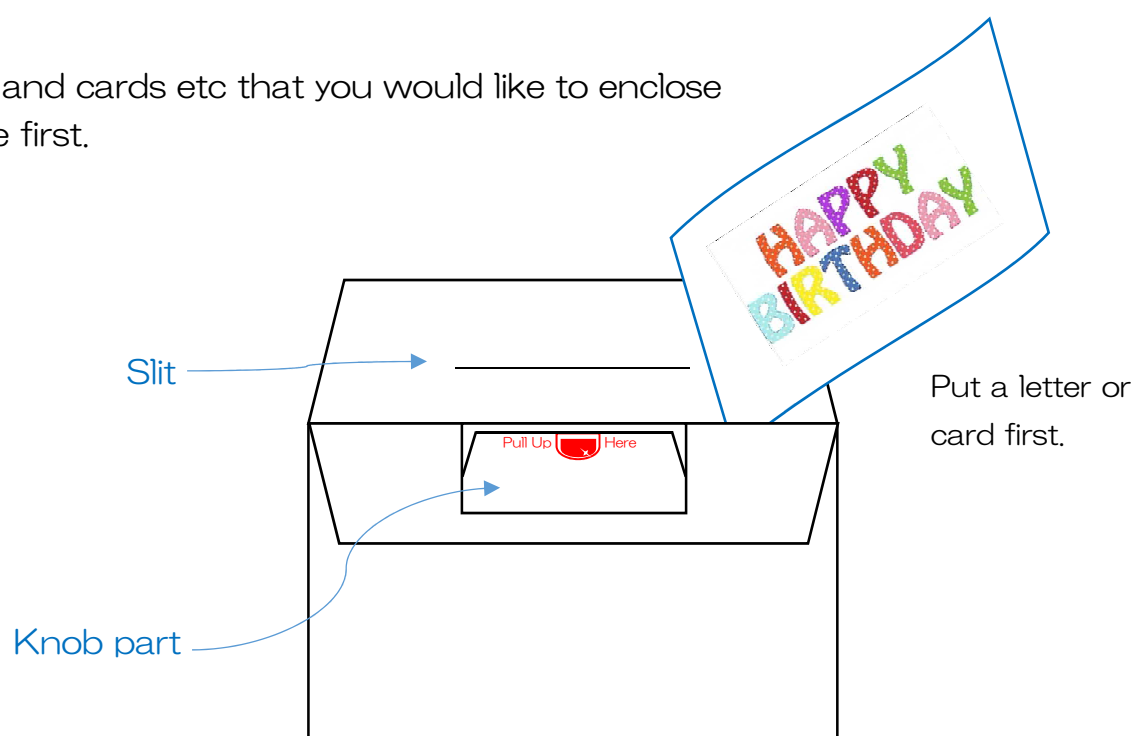


5. Attach the part A to the envelope as shown in the figure and complete it by gluing it.

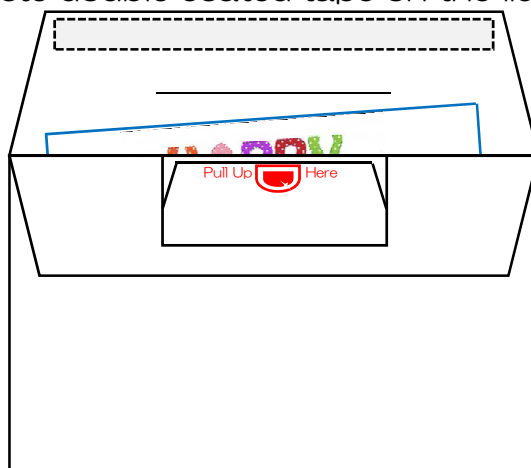


### How to use Surprise-Envelope "Sparky"

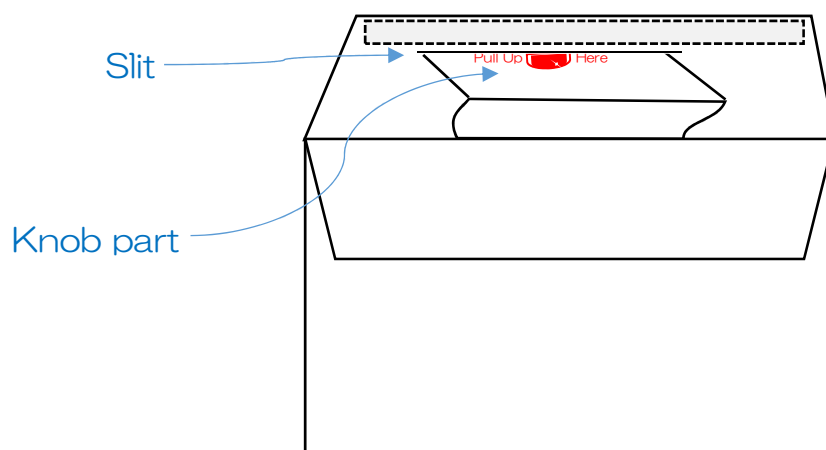
6. Put the letters and cards etc that you would like to enclose in the envelope first.



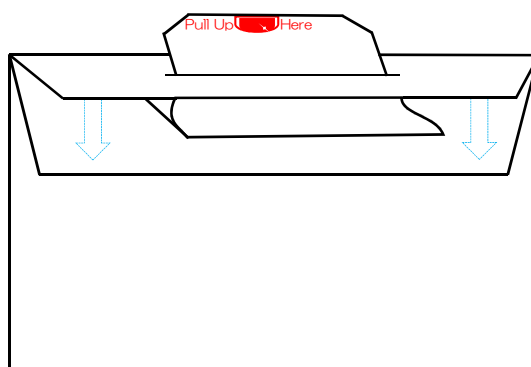
7. After putting it in the envelope, paste double coated tape on the lid or paste it.



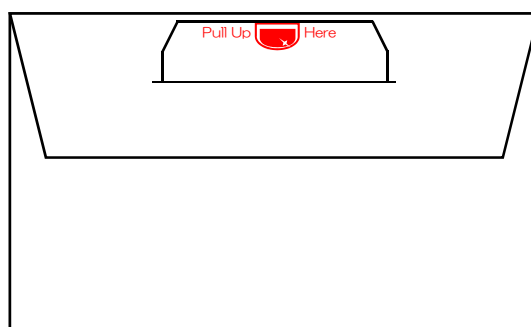
8. Insert the part of the thumb mark  as shown in the figure.  
Please be careful not to stick the knob part to the tape part of the lid at this time.



9. Stick the envelope lid and seal it.



10. Completion after firmly pasting.



View by Movie ➡ <http://templates.envelopes.jp/how-to-make.html>